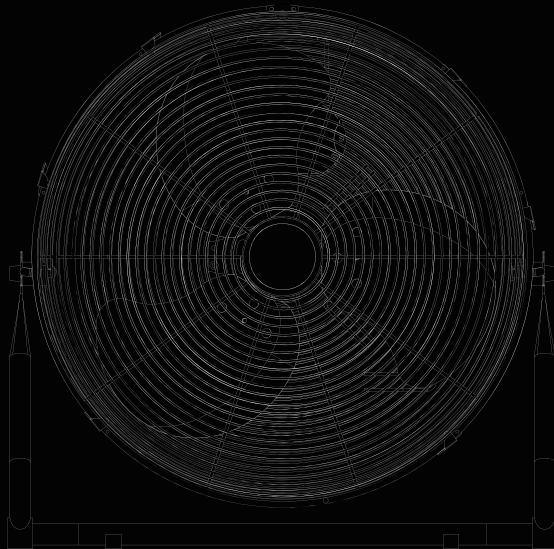


devola

Comfortable living everyday

Instruction Manual



Devola Floor Air Circulator Fan

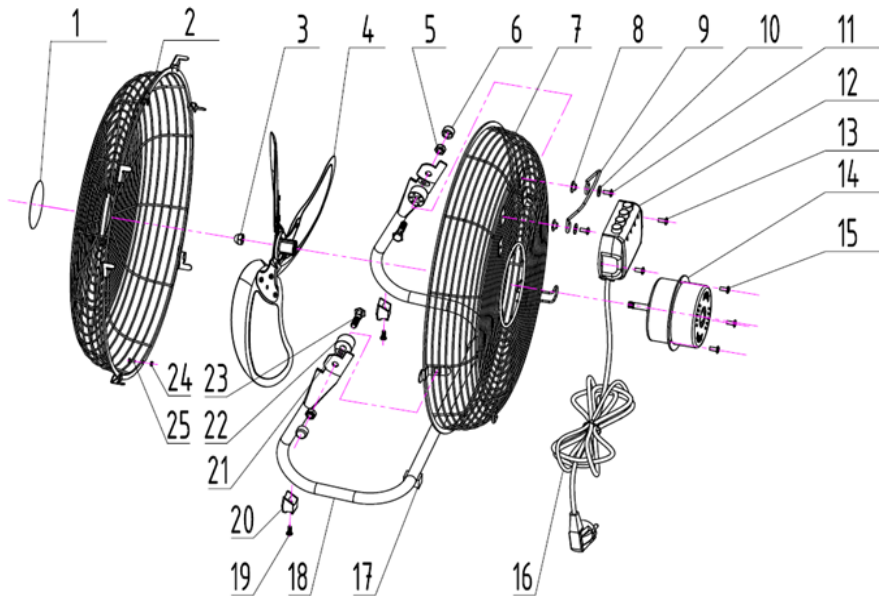
DV16FFB, DV16FFC
DV20FFB, DV20FFC



devola.co.uk

This sleek & modern high-velocity fan provides more powerful wind than ordinary plastic fans. It draws air off the floor and circulates through the entire room keeping room cool and breezy. Put near the windows and it helps exhaust hot indoor stuffy air and pulls in fresh outdoor air.

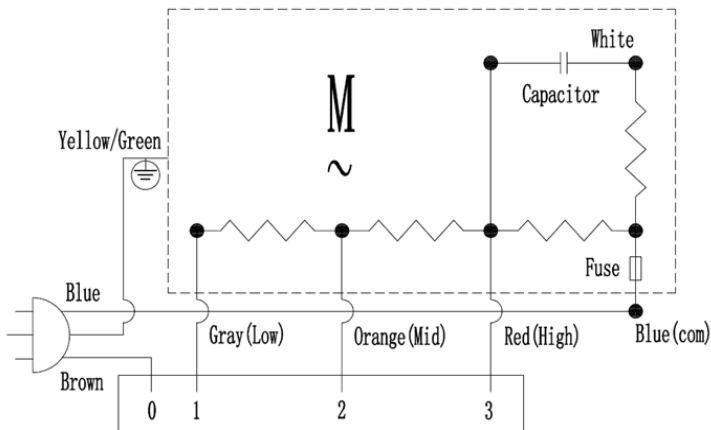
- Energy-saving, high velocity motor for maximum air circulation
- Up, down manual tilt-adjustment for flexible use
- Triple speed selection
- Precision fan blades for powerful wind but low-noise
- Chrome-stand, solid construction with thermal-protection to prevent motor overheat.



- | | |
|---------------------|------------------|
| 1. Decorating Plate | 13. Screw |
| 2. Front Guard | 14. Motor |
| 3. Nut | 15. Screw |
| 4. Blade | 16. Power Cord |
| 5. Nut | 17. Non-slip Pad |
| 6. Nut Cover | 18. Bracket |
| 7. Rear Guard | 19. Screw |
| 8. Plastic Pad | 20. Non-slip Pad |
| 9. Handle | 21. Plane Washer |
| 10. Plane Washer | 22. Plastic Pad |
| 11. Screw | 23. Screw Bolt |
| 12. Switch Box | 24. Nut |
| | 25. Screw Bolt |

Operating Instructions:

1. Ensure voltage used corresponds with the voltage indicated.
2. Turn the speed control to selected speeds:0(off) and speeds 1,2,3 is Slow, Middle, Fast.
3. Tilting angles-By pushing the tilt-guard, you can adjust the fan to any elevation preferred.
4. Never touch the blades with hand or any object!
5. Do not pull the cord too hard. If damaged after pro-long use get it repaired by any electrical repairman.
6. To clean: Disconnect the power cord from the mains. Remove the guard and the blades carefully. Do not drop the blades! First use soft cloth with light soap to clean off oil stains. Then wipe and polish with dry cloth. Never use polish or any corrosive liquid that will damage the paint, metal or plastic! Put back the blades and lock the guard securely before use.
7. This appliance is not intended for use by persons (including children) with reduced physical, sensory or mental capabilities, or lack of experience and knowledge, unless they have been given supervision or instruction concerning use of the appliance by a person responsible for their safety.
8. Children should be supervised to ensure that they do not play with the appliance.
9. If the supply cord is damaged, it must be replaced by the manufacturer its service agent or similarly qualified persons in order to avoid a hazard.
10. When assembling the fan, always wear gloves.



Safety Instructions

General Safety Information

- 1. Read and Save Instructions:**
 - Carefully read all safety and operating instructions before using the desk fan.
 - Retain these instructions for future reference.
- 2. Intended Use:**
 - This product is intended for indoor, domestic use only. Do not use outdoors or for commercial purposes.
 - Use the fan only as described in this manual. Improper use may result in electric shock, fire, or injury.

Electrical Safety

- 1. Power Supply:**
 - Ensure that the voltage of your power outlet matches the voltage rating specified on the fan's label.
 - Plug the fan into a properly grounded outlet. Do not use if the plug or power cord is damaged.
- 2. Power Cord and Plug:**
 - Do not operate the fan with a damaged cord or plug. Contact a qualified technician for repairs or replacements.
 - Avoid running the power cord under carpets, rugs, or furniture, and keep it away from high-traffic areas.
- 3. Water and Moisture:**
 - Keep the fan dry. Do not expose it to dripping or splashing water.
 - Do not place containers filled with liquids near or on the fan.
- 4. Switch Off When Not in Use:**
 - Always unplug the fan when it is not in use, during maintenance, or when moving the device.

Usage Precautions

- 1. Children and Pets:**
 - Keep the fan out of reach of children and pets. This appliance is not a toy.
 - Supervise children and persons with reduced capabilities if they use the fan.
- 2. Ventilation:**
 - Ensure the fan has adequate ventilation during operation. Do not obstruct the air inlets or outlets.
- 3. Hot Surfaces:**
 - The motor housing may become warm during use. Avoid contact to prevent burns.
- 4. Moving Parts:**

- Keep hands, hair, clothing, and other objects away from the fan blades while the unit is operating.
5. **Do Not Modify:**
- Do not disassemble, repair, or modify the fan. This may compromise safety and void the warranty.

Installation and Placement

1. **Stable Surface:**
 - Place the fan on a flat, stable surface to prevent it from tipping over.
2. **Safe Distance:**
 - Ensure a safe distance from walls, furniture, or other objects to allow unrestricted airflow.
3. **Environment:**
 - Do not use the fan in dusty, oily, or potentially flammable environments.

Maintenance and Cleaning

1. **Disconnect Before Cleaning:**
 - Turn off and unplug the fan before performing any cleaning or maintenance.
2. **Approved Cleaning Agents:**
 - Use a soft, damp cloth for cleaning. Do not use harsh chemicals, solvents, or abrasives.
3. **Periodic Inspection:**
 - Inspect the fan regularly for any visible damage or wear. Stop use immediately and contact a professional if repairs are needed.



Product Registration

Register your warranty online
within 30 days of purchase.

www.devola.co.uk/warranty



10% OFF

Use this discount code on your next order

DEV10



Scan for technical details



devola.co.uk

Unit 1, Reedswood Park Road, Walsall, West Midlands. WS2 8DQ

Helpline 0800 043 4243 Email info@devola.co.uk